

---

# Landscape Proposal

West Water - West Linton

March 2023

---

Presentation

Landscape Proposal For West Water, East Linton

In conjunction with MAKAR Ltd

March 2023

Landscape Design Contact  
Alan MacInnes  
alan@stephenogilvie.co.uk  
tel : 07506947426



# CONTENTS

---

MASTERPLAN

Plan and Key

PLANTING - RESOURCES, FUNDING AND APPLICATIONS

PERENNIAL PLANTING

Locations and Images

HEDGEROW

Locations and Images

ORCHARD

Locations and Images

TREE PLANTING

Locations and Images

HARDSCAPE

Locations and Images



# MASTERPLAN

## KEY



LAWN  
-mown grass



GRASSLAND  
- See 'Perennial Planting Section'



ORCHARD  
-Fruit Trees with associated companion planting  
-See 'Orchard Section'



GRAVEL DRIVEWAY  
- Including Tree Root Protection cells at site Access



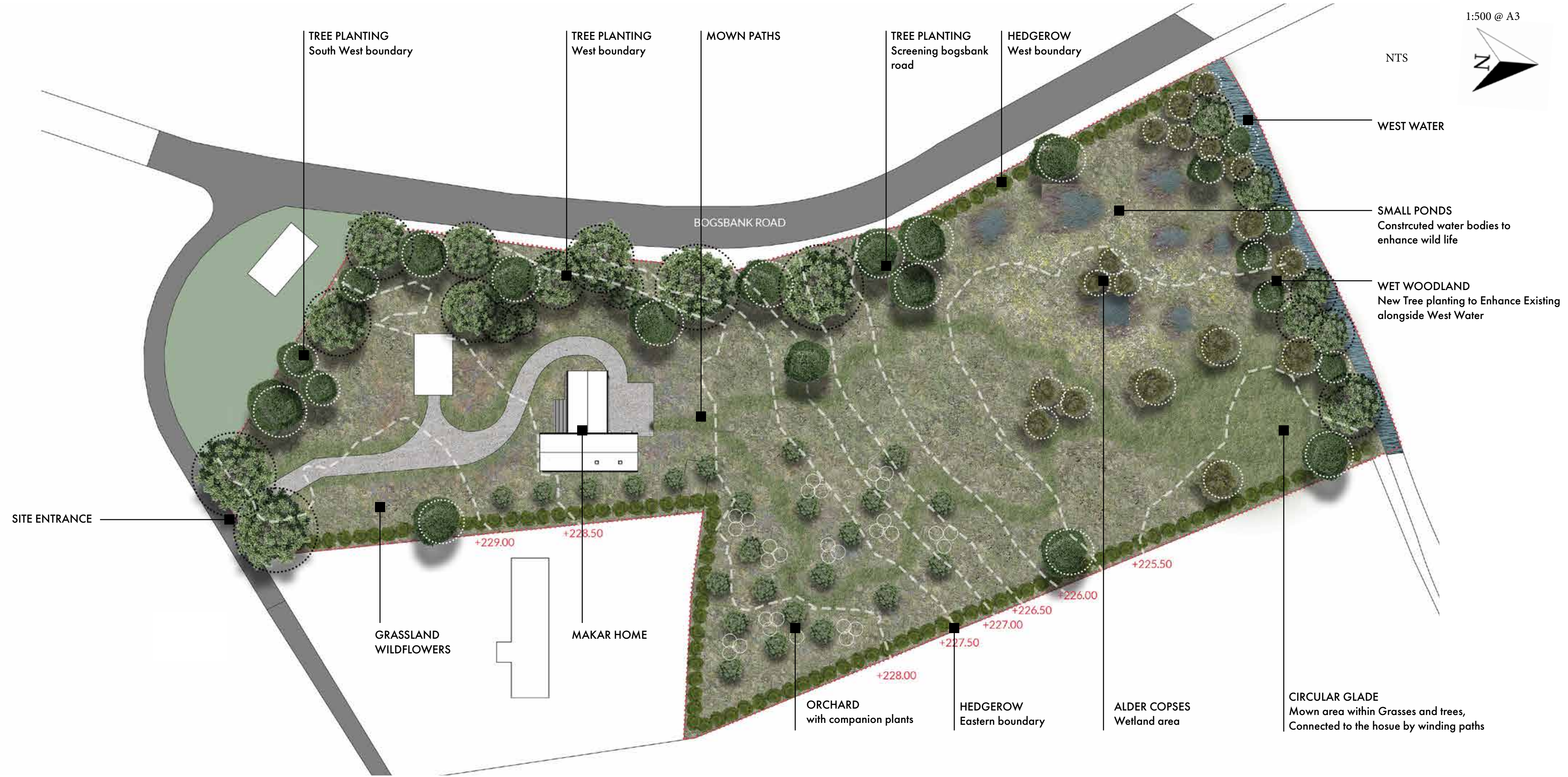
WETLAND



HEDGEROW  
- See 'Hedgerow' Section



TREE PLANTING  
- Existing and Proposed  
-See 'Tree Planting' Section



1:500 @ A3



NTS

WEST WATER

SMALL PONDS  
Constructed water bodies to enhance wild life

WET WOODLAND  
New Tree planting to Enhance Existing alongside West Water

TREE PLANTING  
South West boundary

TREE PLANTING  
West boundary

MOWN PATHS

TREE PLANTING  
Screening bogbank road

HEDGEROW  
West boundary

SITE ENTRANCE

GRASSLAND  
WILDFLOWERS

MAKAR HOME

ORCHARD  
with companion plants

HEDGEROW  
Eastern boundary

ALDER COPSES  
Wetland area

CIRCULAR GLADE  
Mown area within Grasses and trees,  
Connected to the house by winding paths



# PLANTING – RESOURCES, FUNDING AND APPLICATIONS

## COMPLETED

**Type:** : General Planting

**Funding** : South of Scotland Tree Planting Grant

**Organisation** : Borders Forest Trust & Galloway Glens Landscape Partnership

**Status** : **Approved** (Jan 26th) - Ref SSTPGBFT036

**Rational** : Rationale: Funds approved to plant individual, or small clumps of trees, which will **enhance the landscape and biodiversity** of the South of Scotland. The funding value is £997.24 ( inc VAT) and the selected species will be used to bulk up existing mature stands of trees, provide screening from the road, to create a **wet woodland, stabilise banks** and create small copses within the site.

Botanical Name	Common Name	Quantity	Location
<i>Alnus glutinosa</i>	Alder (x12)	12	Wet Woodland/flood plane grassland
<i>Pinus sylvestris</i>	Scot's pine (x6)	6	Screening / buffering on SW/W
<i>Sorbus aucuparia</i>	Rowan	4	Hedgerow
<i>Corylus avellana</i>	Hazel	2	Hedgerow
<i>Prunus domestica 'Victoria'</i>	Plum victoria	2	East boundary ( beside property ) / Orchard
<i>Prunus domestica subsp. Insitia</i>	Damson	1	East boundary ( beside property ) / Orchard
<i>Pyrus communis</i>	Pear	2	East boundary ( beside property ) / Orchard
<i>Malus domestica</i>	Apple	10	Orchard

**Type** : Perennial Planting

**Funding** : **Self-Funded**

**Organisation** : Not applicable

**Status** : **Complete**

**Rational** : The majority of the site is rough grassland - any action to increase the **species diversity** through the planting of suitable wildflowers should be supported and encouraged. It is possible, through a combination of planting and selective mowing, to transform areas into grassland meadow- which can **support** a wide range of **bird fauna and invertebrate species**. These grassland habits are in decline generally due to agricultural intensification therefore there is a real opportunity to create a locally important site of species diversity.

Botanical Name	Common Name	Quantity	Location
<i>Abutilon millefolium</i>	Yarrow	16	Flood plane / wet grassland
<i>Caltha palustris</i>	Marsh Marigold	12	Flood Plane / wet grassland
<i>Carex acutiformis</i>	Lesser pond sedge	12	Flood plane / wet grassland
<i>Centaurea nigra</i>	Knapsweed	16	Grassland
<i>Eriophorum angustifolium</i>	Cottongrass	10	Flood plane / wet grassland
<i>Knausia arvensis</i>	Field scabious	16	Grassland
<i>Lotus corniculatus</i>	Bird's-foot trefoil	16	Grassland
<i>Lychnis fls-cuculi</i>	Ragged robin	10	Grassland
<i>Primula veris</i>	Cowslip	16	Grassland
<i>Prunella vulgaris</i>	Heal-all	10	Grassland
<i>Ranunculus acris</i>	Meadow buttercup	20	Grassland
<i>Silene dioica</i>	Red campion	10	Grassland

SEE PERENNIAL PLANTING SECTION

## ONGOING

**Type:** :Hedgerow

**Funding** : MOREhedges

**Organisation** : Woodland Trust

**Status** : Ongoing, Application received Feb 2023, minimum 500 trees

**Rational** : Funding provided to plant 100-250 metres of new hedgerow with at least 100mm in a single run. The hedgerows must **connect directly with existing or newly planted woodland**. The site has stands of mature trees along the south & south-west boundary as well as existing riparian habitat on the northern edge. The **hedgerow installation** is an opportunity to connect the wild-life habitat within the site as well as **strengthen the ecological networks** in the wider landscape.

Botanical Name	Common Name	Quantity	Location
<i>Craetagus monogyna</i>	Hawthorn	tbc	Hedgerow Perimeter
<i>Corylus avellana</i>	Hazel	tbc	Hedgerow Perimeter
<i>Prunus spinosa</i>	Blackthorn	tbc	Hedgerow Perimeter
<i>Ilex aquifolium</i>	Holly	tbc	Hedgerow Perimeter
<i>Sambucus nigra</i>	Elder	tbc	Hedgerow Perimeter
<i>Rosa canina</i>	Dog Rose	tbc	Hedgerow Perimeter

SEE HEDGEROW SECTION

**Type:** : Trees

**Funding** : MOREtrees

**Organisation** : Woodland Trust

**Status** : Ongoing, Application received Feb 2023

**Rational** : Funding provided to plant a minimum of 500 trees to improve the wild life habitat and biodiversity potential across the site. The selected species should aim to 'best replicate the nearby native woodland as defined on Native Woodland for Scotland Survey ( NWSS )' (Woodland Trust). The suggested tree species below fall into the categories of **'Wet Woodland'** and **'Lowland Mixed Deciduous Woodland'** - both examples of nearby native woodland. ( See National Vegetation Classification (NVC) categories W8d/ W10 and W16(a) for more detail on sub-communities and habitat types.

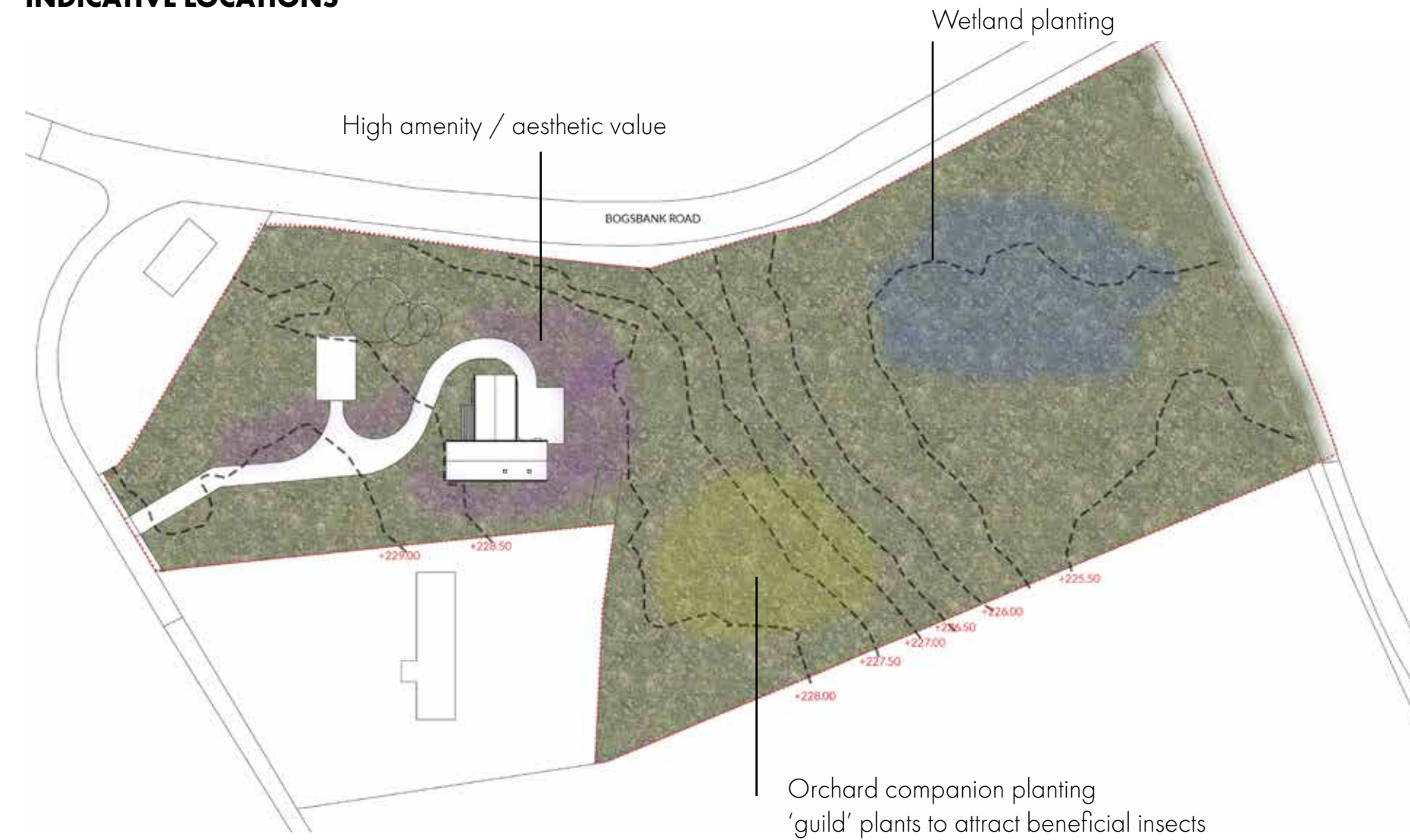
Botanical Name	Common Name	Quantity	Suggested Location
<i>Acer campestre</i>	Field Maple	tbc	Screening / buffering / hedgerow
<i>Tilia x europaea</i>	Common Lime	tbc	Screening / buffering
<i>Carpinus betulus</i>	Hornbeam	tbc	Screening / buffering on SW/W of site
<i>Quercus robur</i>	Pedunculate Oak	tbc	Screening / buffering on SW/W
<i>Quercus petraea</i>	Sessile Oak	tbc	East boundary (
<i>Betula pendula</i>	silver birch	tbc	East boundary
<i>Alnus glutinosa</i>	Alder	tbc	Wet Woodland/bank stabilisation
<i>Salix cinerea</i>	Grey willow	tbc	Wet Woodland/bank stabilisation
<i>Salix pentandra</i>	Bay willow	tbc	Wet Woodland/bank stabilisation

SEE TREE PLANTING SECTION



# PERENNIAL PLANTING

## INDICATIVE LOCATIONS



## SPECIES LIST

Botanical Name	Common Name	Quantity	Location
<i>Achillea millefolium</i>	Yarrow	16 (+)	Flood plane / wet grassland
<i>Caltha palustris</i>	Marsh Marigold	12 (+)	Flood Plane / wet grassland
<i>Carex acutiformis</i>	Lesser pond sedge	12 (+)	Flood plane / wet grassland
<i>Centaurea nigra</i>	Knapweed	16 (+)	Grassland
<i>Eriophorum Angustifolium</i>	Cottongrass	10 (+)	Flood plane / wet grassland
<i>Knautia arvensis</i>	Field scabious	16 (+)	Grassland
<i>Lotus corniculatus</i>	Bird's-foot trefoil	16 (+)	Grassland
<i>Lychnis flo-cuculi</i>	Ragged robin	10 (+)	Grassland
<i>Primula veris</i>	Cowslip	16	Grassland
<i>Prunella vulgaris</i>	Heal-all	10	Grassland
<i>Ranunculus acris</i>	Meadow buttercup	20	Grassland
<i>Silene dioica</i>	Red campion	10	Grassland
<i>Borago officinalis</i>	Borage	tbc	Orchard
<i>Myrrhis odorata</i>	Sweet cicily	tbc	Orchard

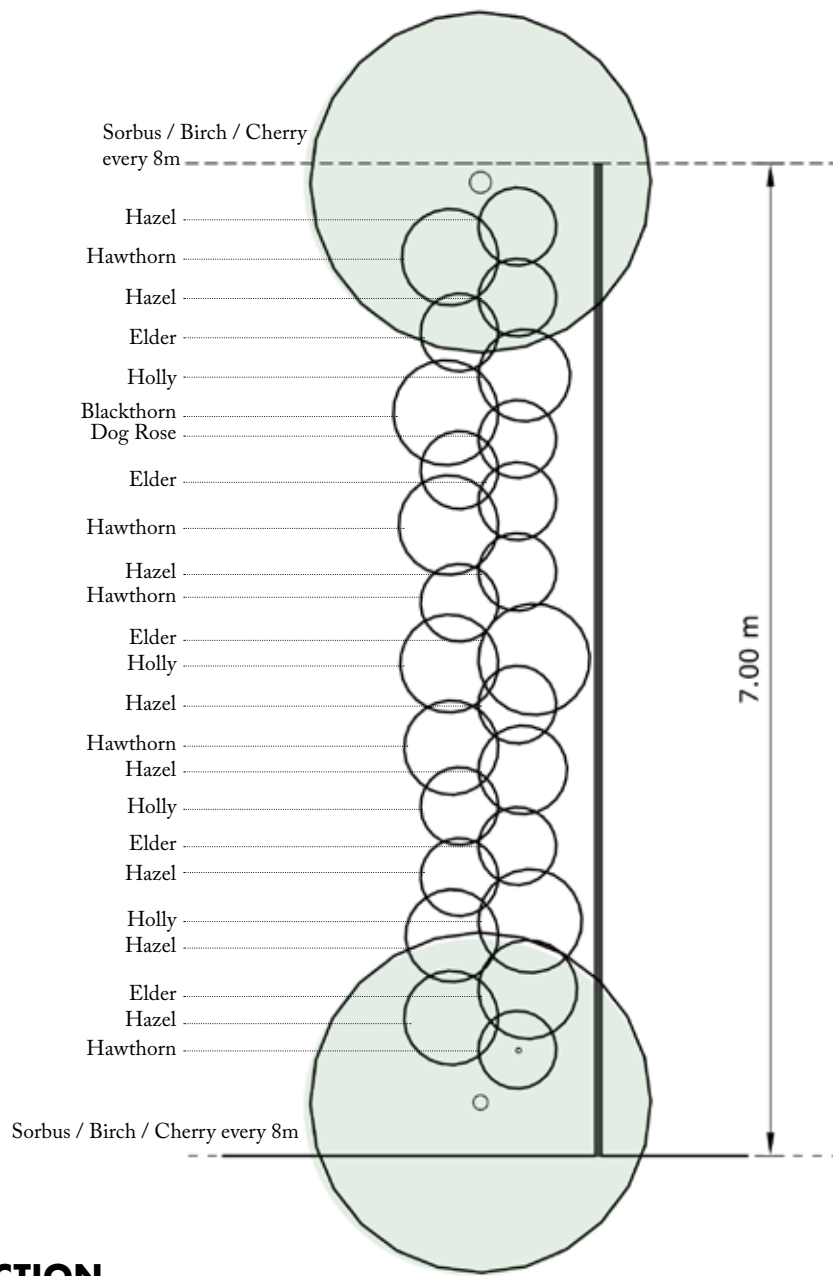


Looking south towards the house. Mown path winds through grassland and wildflowers. Additional tree planting shown on south west side ( right hand )

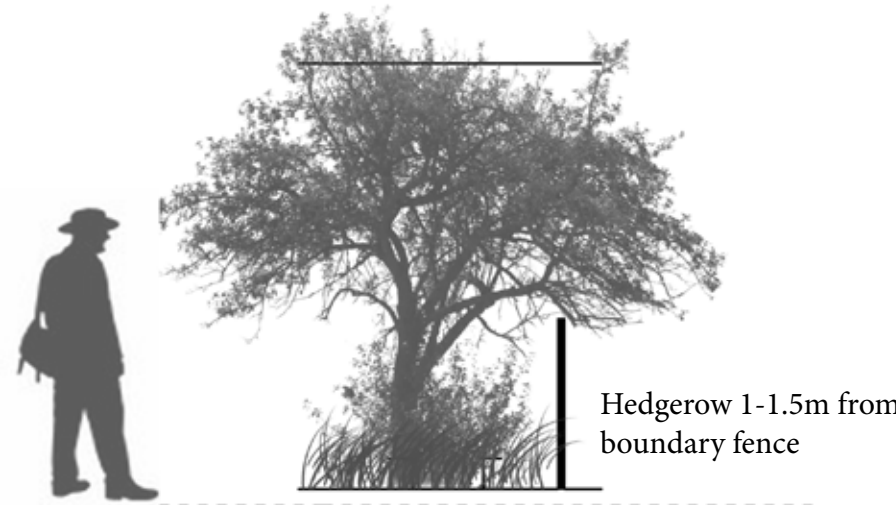


# HEDEGROW

## INDICATIVE PLANTING PLAN

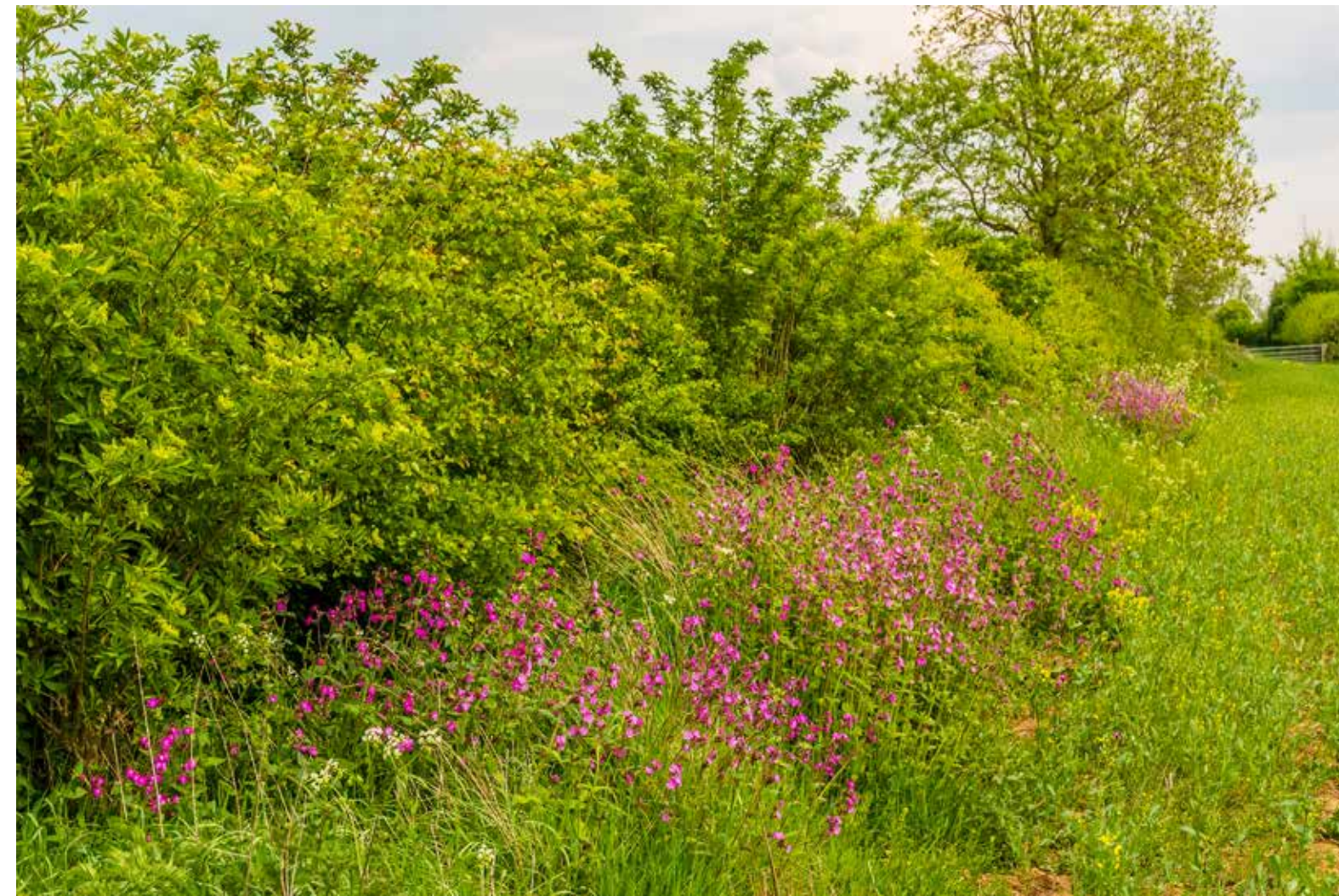


## SECTION



## SPECIES LIST

Botanical Name	Common Name	Quantity	Location
<i>Crataegus monogyna</i>	Hawthorn	tbc	Hedgerow Perimeter
<i>Corylus avellana</i>	Hazel	tbc	Hedgerow Perimeter
<i>Prunus spinosa</i>	Blackthorn	tbc	Hedgerow Perimeter
<i>Ilex aquifolium</i>	Holly	tbc	Hedgerow Perimeter
<i>Sambucus nigra</i>	Elder	tbc	Hedgerow Perimeter
<i>Rosa canina</i>	Dog Rose	tbc	Hedgerow Perimeter



EXAMPLE OF A MATURE HEDGEROW

## HEDGEROW PLANTING AND ECOLOGICAL CONNECTIONS





# ORCHARD



Apple, pear & damson



Russian Olive - *Elaeagnus angustifolia*



Italian Alder - *Alnus cordata*

Nitrogen fixating companion plants



Sweet cicily



Borage



Dogwood

Beneficial groundcover

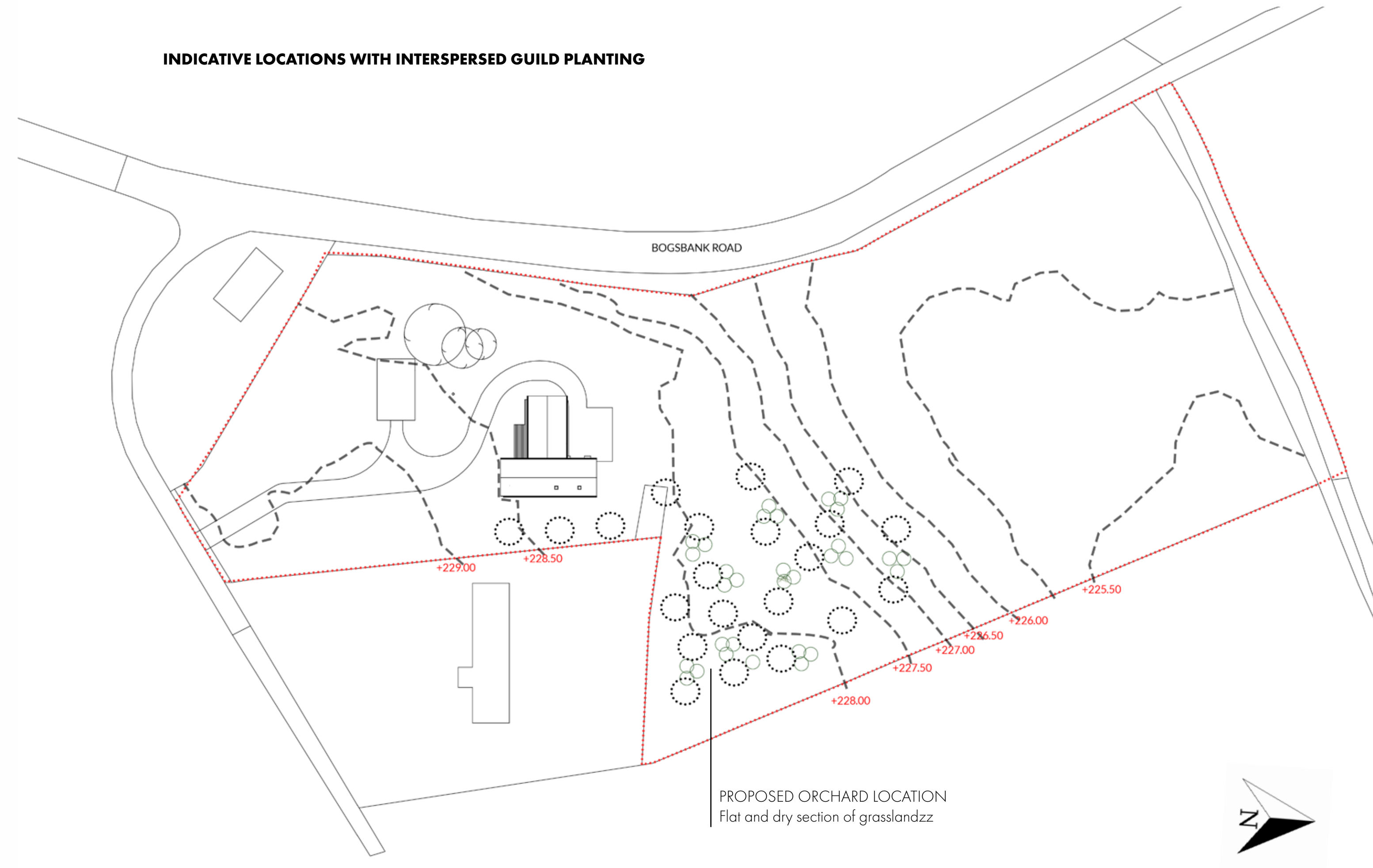
produce



4.5 metres

SECTION - showing indicative tree spacings, guild planting & mown path

## INDICATIVE LOCATIONS WITH INTERSPERSED GUILD PLANTING



PROPOSED ORCHARD LOCATION  
Flat and dry section of grasslandzz





Basic rendering to show scale and density of orchard planting in relation to wider landscape. Wetland copses shown on left-hand side



# TREE PLANTING

The tree species listed below are selected to align with the woodland type 'Lowland mixed deciduous woodland' as defined by National Woodland for Scotland Survey (NWSS). For further information see the National Vegetation Classification categories W8d/W10 & W16(a).

Botanical Name	Common Name	Quantity	Suggested Location
<i>Acer campestre</i>	Field Maple	tbc	South boundary / Screening / buffering / hedgerow
<i>Tilia x europaea</i>	Common Lime	tbc	South boundary / Screening / buffering
<i>Carpinus betulus</i>	Hornbeam	tbc	Screening / buffering on SW/W of site
<i>Quercus robur</i>	Pedunculate Oak	tbc	Screening / buffering on SW/W
<i>Quercus petraea</i>	Sessile Oak	tbc	Screening / buffering on SW/W / specimen
<i>Betula pendula</i>	silver birch	tbc	West boundary



Field Maple



Lime



Hornbeam



Pedunculate Oak



Sessile Oak



Silver birch

The tree species listed below are selected to align with the woodland type 'Wet Woodland' as defined by National Woodland for Scotland Survey (NWSS). For more information see the National Vegetation Classification categories W1-W6.

Botanical Name	Common Name	Quantity	Suggested Location
<i>Alnus glutinosa</i>	Alder	tbc	Wet Woodland/bank stabilisation/copses
<i>Salix cinerea</i>	Grey willow	tbc	Wet Woodland/bank stabilisation/copses
<i>Salix pentandra</i>	Bay willow	tbc	Wet Woodland/bank stabilisation/copses
<i>Alnus cordata</i>	Italian alder	tbc	Orchard companion planting



Alder



Bay willow

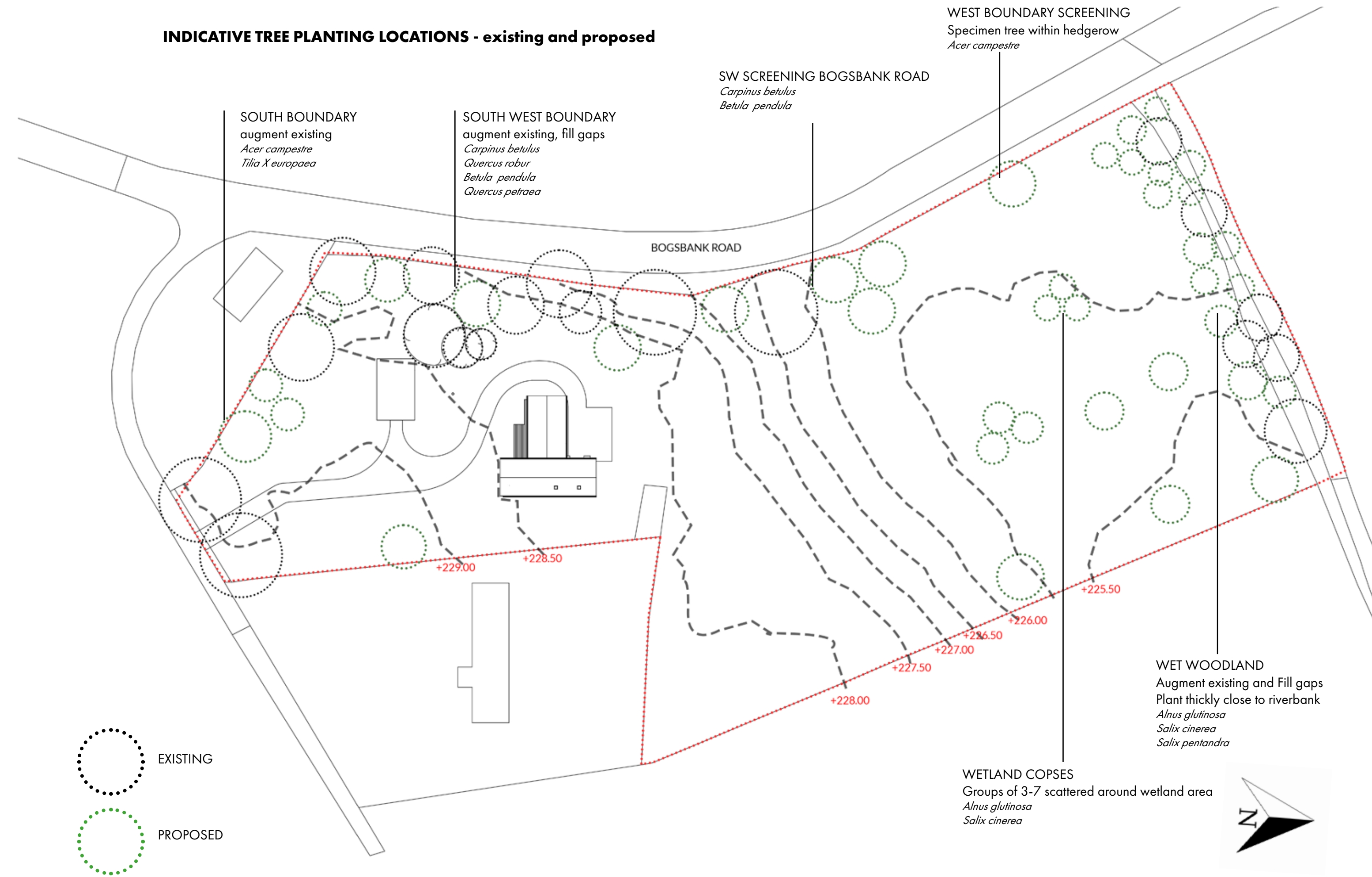


Grey Willow



Italian alder

## INDICATIVE TREE PLANTING LOCATIONS - existing and proposed





# GRAVEL DRIVEWAY



Steel edging restraint to retain gravel drive



Tree root protection cells



Flint gravel 20mm

